

PRIOR TO INSTALLATION

Read all instructions prior to installation, follow all guidelines for a successful installation. It is important to work out of several cartons to mix the patterns when installing Allegheny to properly mix the décor and ensure a beautiful application. Eastern Flooring Products® produces Allegheny to imitate natural color and texture variation, but there are a finite number of unique pieces. Therefore, it is necessary to pay attention to avoid creating patterns by installing identical pieces beside one another or inadvertently creating unintended patterns.

All pieces should be thoroughly inspected prior to installation. Installation of material constitutes acceptance of physical and/or aesthetic imperfections. If you have any concerns about the product, please immediately call Eastern Flooring Products®. Flooring that has been cut or installed is not eligible for claims.

Allegheny does not require acclimation; however, the flooring should be the same temperature as the environment in which it is being installed. Installation environments should be temperature controlled by an HVAC system to provide a constant temperature of 50-85° F prior to installation, during installation, and for 24 hours after installation. When installing Allegheny in 3 season scenarios, please ensure that the area is fully enclosed and will stay constantly between 23-140° F

It is important to protect Allegheny from exposure to direct sunlight. Direct sunlight can result in thermal expansion, UV fading, and discoloration. Ideal protection will include UV treated windows and the use of drapes/blinds during peak sunlight hours.

Eastern Flooring Products® recommends installing Allegheny after all other trades have completed their work to avoid damaging the flooring. To maintain a floating installation, do not fasten anything through the flooring such as cabinets, toilets, trim, or molding. Failure to maintain a floating installation may result in buckling.

Expansion is required around all fixed obstructions such as walls, door jambs, cabinets fastened to the floor, islands, or toilets. Please allow the following expansion space depending on the maximum length of the flooring in any direction.

- Less than 40' – 1/4" expansion gap
- 40' to 65' – 3/8" expansion gap
- Over 65' – Contact technical support at Eastern Flooring Products®

SUBFLOOR GUIDELINES

Before beginning installation, read all subfloor guidelines for the correct subfloor type. Proper subfloor preparation is the responsibility of the installer and one of the most important components of the durability of any floor.

Subfloor must be level, flat, clean, dry, and structurally sound. Subfloor flatness must be within 3/16" in 10' or 1/8" in 6' in all directions. Subfloor must be free of any dust, solvent, wax, asphalt sealing compound, and other material that may compromise the backing of the flooring or inhibit the

free floating of the floor after installation. Unevenness and obstructions may compromise the locking mechanism and cause it to disengage.

Any patching or leveling compound used to achieve a flat subfloor needs to meet subfloor alkalinity and moisture standards. Eastern Flooring Products® recommends the use of a water resistant, non-shrinking, Portland leveling compound with a compressive strength of at least 3,000 psi.

Allegheny is waterproof, but it is not a vapor barrier. Subfloor moisture can still cause mold, mildew, and other moisture-related issues, unrelated to Allegheny. It is the responsibility of the installer to ensure the subfloor is not improperly emitting moisture prior to installation.

CONCRETE GUIDELINES

Concrete subfloors must meet the updated ASTM F710 guidelines, prior to installation. New concrete floors should be fully cured prior to installation. Concrete slabs must have no visible moisture. Concrete subfloors should be free of any adhesive residue. If adhesive residue is cut-back it must be removed by safe methods such as mechanical removal or wet scraping. Contact a professional to remove these adhesives as breathing crystalline silica or asbestos fibers can cause cancer and is a severe respiratory hazard. Refer to the Resilient Floor Covering Institute's guide "Recommended Work Practices for Removal of Resilient Floor Coverings" for more information on safe removal of resilient flooring.

It is a best practice to conduct moisture and pH testing prior to installing any floor to limit liability. Ensuring acceptable moisture levels for Allegheny are the responsibility of the installer. Eastern Flooring Products® is not liable for moisture related claims that do not meet stated installation standards.

- ASTM 1869 Calcium Chloride – maximum result 8lbs
- ASTM 2170 Relative Humidity – maximum result 90% per 1000 sf per 24 hours
- Concrete pH should be no less than 7, but not exceed 10

Allegheny is waterproof, but it is not a vapor barrier. Subfloor moisture can still cause mold, mildew, and other moisture-related issues, unrelated to Allegheny. It is the responsibility of the installer to ensure the subfloor is not improperly emitting moisture prior to installation. An additional layer of underlayment with a perm rating of .1 or less may be used as a vapor barrier over concrete floors.

WOOD GUIDELINES

Wooden subfloors must meet the updated ASTM F1482 guidelines, prior to installation. Be certain the floor joists do not impede the floor flatness as required. Floors must be sufficiently rigid to avoid excess deflection. An additional layer of APA rated 1/4" thick underlayment is recommend to aid rigidity where unacceptable conditions exist.

Crawl spaces and basements must be dry. The bottom of wooden subfloor joists must be a minimum of 18" above ground surface. 6 mil or greater black polyethylene sheeting must be in place covering 100% of the ground and overlapping a minimum 6" at seams acting as a moisture barrier. This polyethylene sheeting must run up the walls no less than 6". Air venting must be open on all sides and open no less than 1.5% of the total crawlspace area. Plastic sheeting is not recommended over wood subfloors.

OTHER GUIDELINES

Acceptable subfloor types include:

- Concrete slab meeting updated ASTM F710 guidelines
- APA rated plywood underlayment meeting updated ASTM F1482 guidelines
- Underlayment grade particleboard
- Securely fastened hard surface flooring including hardwood, ceramic tile, or one layer of resilient sheet or tile. Must be clean, flat, free of deflection, and securely adhered or fastened.
- Properly prepared gypsum cement.

Unacceptable subfloor types include, but are not limited to:

- Crumb rubber underlayment, as it may interact with the flooring, chemically.
- Existing floating flooring or cushion back products of any kind. Soft layers of flooring under Allegheny may compromise the locking integrity and resistance to indentation.
- Ceramic tile with grout joints exceeding 1/4" in width. Grout joints exceeding 1/4" must be filled with an acceptable patching compound, previously described.
- Carpet of any kind.
- Wood adhered to concrete, including sleeper construction subfloors.
- Underlayment with cushioning properties. Allegheny already features a comfortable IXPE pad and further cushioning may compromise the integrity of the locking mechanism.

Radiant Heat

- Embedded radiant heating elements are acceptable in the subfloor provided they are a minimum of 1/2" from Allegheny in final installation.
- Material covering embedded radiant heating elements should still meet subfloor standards.
- To install Allegheny over radiant heating systems, system should be running and operational for at least 2 weeks prior to installation. 72 hours before installation, system temperature should be reduced to 65°F or cooler. After installation, increase temperature in increments of 5°F per 24 hours period to avoid overheating. Once installed, the floor temperature should never exceed 85°F.

INSTALLATION INSTRUCTIONS

Required Tools

1. Appropriately sized spacers, depending on the installation dimension

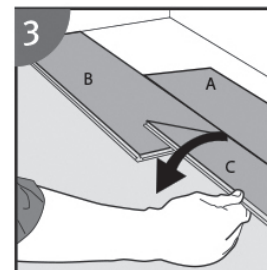
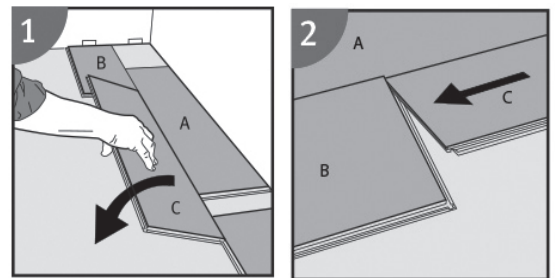
2. Tape measure
3. Cutter
4. Rubber hammer

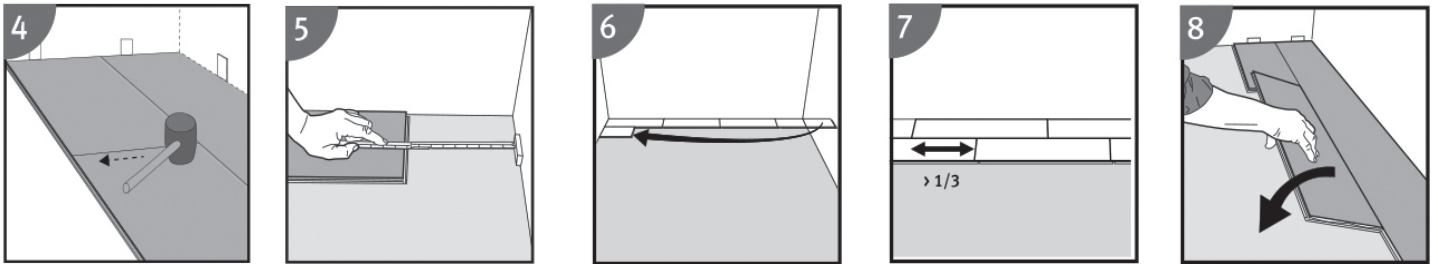
Installation Notes

1. Always start installation in the left corner of the room. When installing, the tongue side of the pieces should face your starting wall.
2. Ensure your starting piece is no less than one third the size of your total piece.
3. Should you need to disassemble two pieces on the long side, you can lift to the same angle used when assembling the pieces. Failure to disassemble correctly can damage the pieces. This installation should be done to an entire row at one time if the planks are already engaged on the short side.
4. Should you need to disassemble two pieces on the short side, you must first disassemble the pieces from the long side, then lift vertically from the middle of the short side connection to disengage.
5. If poly film is required for installation, install the first of poly film before installing the material. Run the poly film up the walls prior to installation and trim after installation is finished, being sure not to impede the expansion space of the product. Do not install more than one of poly film at a time to avoid slip hazard. Seams must be taped for concrete substrates with a minimum 4" overlap. Ensure poly film is smooth and flat before laying flooring pieces over it.
6. Use the appropriate amount of expansion space based on the installation dimensions. Under cut door jambs where necessary. Do not under cut metal door jambs without checking local building codes.

Installation Steps

1. Working from multiple cartons, dry lay several rows of material to ensure desired aesthetic.
2. Measure the room to ensure the last row will not be smaller than half the width of the product. If necessary, rip the first row to ensure an appropriately sized final row. You need to also measure your first row to ensure that you are not left with less than one third of a piece at the beginning or end of the row.
3. It is very important that the first row is straight. To ensure this, place a piece (A) for long side alignment of pieces (B) and (C) while they're being installed. After the first row is completed, you can remove piece (A). If your first row must be ripped to width, you may find it easier to install the second and third rows before installing your first row, to ensure the material is straight.





4. To fit piece (C) to piece (B), slide (C) until it is gently touching (B) and fold down in a single movement, while ensuring the pieces remain close to one another.
5. Using firm, manual pressure or a rubber mallet, lightly push or tap the joints on the short side to secure.
6. Install one row after another by starting with angling the long side, sliding until the short sides are in contact then locking the short side.
7. As you go, don't forget to use firm, manual pressure or a rubber mallet on the short sides to secure the end joints.
8. When finished, remove the spacers, ensure you've maintained proper expansion space, and cover the gaps with trim. Ensure your trim doesn't pinch the floor with downward pressure or fasteners.

MOLDING INSTALLATION

1. Eastern Flooring Products® recommends using stair caps on stairs when possible. Matching stair caps and risers can be purchased from your source for Allegheny.
2. All moldings and trim should be thoroughly inspected and dry fit prior to the installation of Allegheny to ensure proper fit, finish, and match.
3. Do not install transition strips to the pieces of flooring, except when instructed to do so in stairnose installation instructions. Do not nail, staple, or screw moldings through the flooring.

AFTER INSTALLATION

1. All furniture must be equipped with felt pads to avoid scratching the floor. Heavy furniture and appliances must be equipped with non-staining large surface floor protectors. Furniture with wheeled castors should only have 2" or wider castors no less than 4" in diameter.
2. Office areas must have a protective mat under chairs or be equipped with non-marking roller blade style wheels. Do not use ball-type castors.
3. Floating floors must not be pinned with fixed cabinetry, heavy equipment, or other heavy items. This includes kitchen cabinets/islands, slate pool tables, safes, or other heavy objects that

would keep the floor from floating freely. If you have a question about a given piece of furniture or otherwise heavy object, please contact Eastern Flooring Products® technical support.

4. Furniture should be moved onto the newly installed floor using an appliance hand truck over hardboard runways.
5. Oil or petroleum-based products can result in surface staining. Do not track asphalt driveway sealer or other oil-based products on the floor.
6. Use walk-off mats at entrances to prevent dirt, grit, and staining substances from damaging the floor. Use mats with non-staining backs, as rubber may discolor the floor.

REPORTING A PROBLEM

If you think there is something wrong with your floor that is covered by this warranty, immediately contact the company you purchased the floor from within 48 hours of noticing the problem. Subsequent damage to the floor is not covered by the warranty.

Do not walk or roll anything over the affected area of the floor until the problem is identified or resolved.

If the company you purchased the product from determines there is a warranted issue with the floor, they will contact Eastern Flooring Products® to file a claim. They are the only party that can file a claim or inquire as to the status of that claim.